



Siemens Voice Radio (SVR) range, whilst fully compliant with current EIRENE specifications, can also be customised to suit specific railway operational requirements. As part of a unified GSM-R radio system, it provides safe and secure communications between signallers, train drivers and other operational staff across the whole of the network.

The GSM-R transportable cab radio is a self contained unit consisting of a GSM-R radio complete with a textual MMI, handset and loudspeaker in a robust case. The transportable cab radio is designed to be easily carried between trains and installed with the minimum of effort and expertise. It can be used as an emergency backup or in trains that do not have a cab radio permanently installed.

### Benefits

The transportable cab radio provides the GSM-R communications capability in trains where a permanently installed cab radio is not required.

The transportable cab radio can be installed at the start of a journey and removed at the end of a journey.

If a permanently installed GSM-R cab radio fails and there is not enough time to change it between journeys a transportable cab radio can be quickly installed to provide emergency backup.

The transportable cab radio is also ideal for use in networks that are undergoing analogue to GSM-R radio enhancement prior to permanent installation of a GSM-R cab radio.

The transportable cab radio is easily carried onto a train and can quickly be brought into operation as it only requires power and antenna connections to be made.

A quick fit mounting bracket is available for secure fitting in the cab.

The transportable cab radio is of proven design, as it shares common hardware and software with the Siemens SVR-400 cab radio, which is in use with a number of rail operators worldwide.

Operation is common with the SVR-400 textual display variant, so no additional driver training required.

There is a clear simple to use MMI with positive press buttons.

It can be easily upgraded to latest Eirene standards and features, either in the depot or on the train.

The lid provides protection when being transported and clips underneath when in operation.

It can be used on any class of train in a fleet as it supports the full range of train voltages and minimises spares holding.

The transportable cab radio is of robust design for use in harsh environments with a wide operating temperature range.

## GSM-R Transportable Cab Radio

A GSM-R cab radio where you need it, when you need it.

## Features

- Four line textual display
- Robust high audio quality handset
- Integral loudspeaker
- Management interface
- Common software with the range of Siemens cab radios.
- Two carry handles and/or a carry strap
- Lid
- Separate mounting frame
- Mandatory Eirene 7/15 features supported
- Readily updateable to later Eirene versions or for additional custom features

The transportable cab radio supports the following main functions:

- Functional addressing
- Location dependent addressing
- Shunting mode
- Railway emergency calls
- Point to point voice calls between driver and controllers, other drivers and train staff
- Public Emergency voice calls
- Broadcast voice calls
- Group voice calls
- Multi-party voice calls
- Incoming and outgoing SMS text messages
- Priority handling
- Incoming cell broadcast messages



## Technical Data

### Power Supply

Train input power supply (Vdc)	24 – 110
Power consumption (W)	60

### Environment

Storage temperature (°C)	-40 to +85
Operating temperature (°C)	-20 to +70
Protection	IP54

### Environmental Tests

Shock and vibrations	EN50155, EN60068-2-6
Storage temperature	E50155
Operating temperature	E50155
Change of temperature	EN60068-2-14
Air pressure	EN60068-2-13
Environmental sealing	EN60529
Safety	EN60950
EMC	EN50121-3-2

### Driver Control Panel

Textual driver control panel	
Handset	
Loudspeaker	4W

### Interfaces

RF interface	Coaxial N-type female
Power Maintenance Interface	4 way circular
Interface	RS232

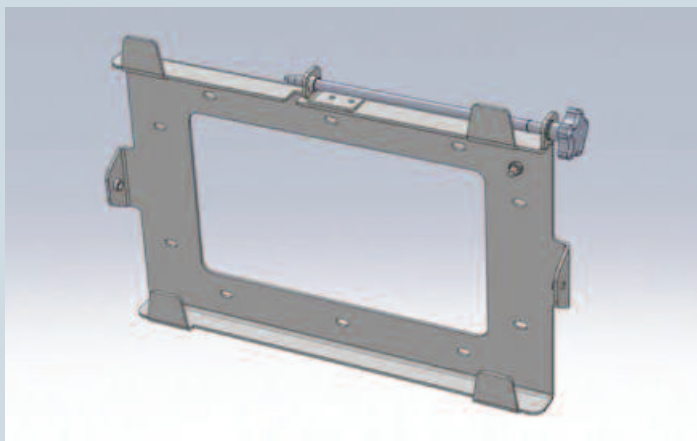
<b>GSM-R Frequency band</b>	900 or 1800 MHz
-----------------------------	-----------------

### Physical Dimensions

Standalone mounting (w x h x d)mm	400 x 300 x 165
Weight (kg)	10

### Reliability

Operational design lifetime	20 years
MTBF (radio rack alone)	60000 hours
MTTR	10 minutes



Quick fit mounting bracket for secure mounting in the cab

Siemens plc  
 Industry Sector  
 Mobility Division  
 Rail Automation  
 Sopers Lane, Poole  
 Dorset BH17 7ER  
 United Kingdom  
 Tel: +44 (0)1202 846000  
 Fax: +44 (0)1202 846202  
 Email: uk.mobility@siemens.com  
 www.siemens.co.uk/mobilecomms

© Siemens plc 2011. All rights reserved.